

Sensing, Artificial intelligence, and Edge networking towards Rural
Health monitoring (SAFE-RH)



Deliverable D4.2 Website



SAFE-RH Project no. 619483-EPP-1-2020-1-UK-EPPKA2-CBHE-JP



Co-funded by the
Erasmus+ Programme
of the European Union

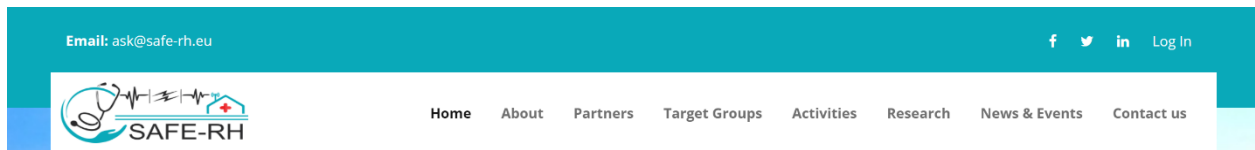
The European Commission support for the production of this publication does not constitute an endorsement of the contents which reflects the views only of the authors, and the Commission cannot be held responsible for any use which may be made of the information contained therein.

Contents

1. Introduction	3
2. Website	3
2.1. Design considerations	3
2.1.1. Layout.....	3
2.1.2. Theme and Colour.....	3
2.2. Header.....	4
2.3. Banner.....	4
2.4. Body	4
2.5. Footer.....	5
2.6. Navigation Menu.....	5
2.6.1. Home.....	5
2.6.2. About.....	5
2.6.3. Partners.....	6
2.6.4. Target Groups	6
2.6.5. Activities.....	6
2.6.6. Research.....	6
2.6.7. News and Events.....	6
2.6.8. Contact Us.....	7
2.7. Admin Panel	8
2.8. Hosting.....	8
3. Logo of the Project.....	8
4. Social Media Platforms	8
4.1. Facebook.....	9
4.2. Twitter.....	9
4.3. LinkedIn.....	10
5. Behind the Scenes.....	10
5.1. Website Templates	10
5.2. Logo Alternatives	12

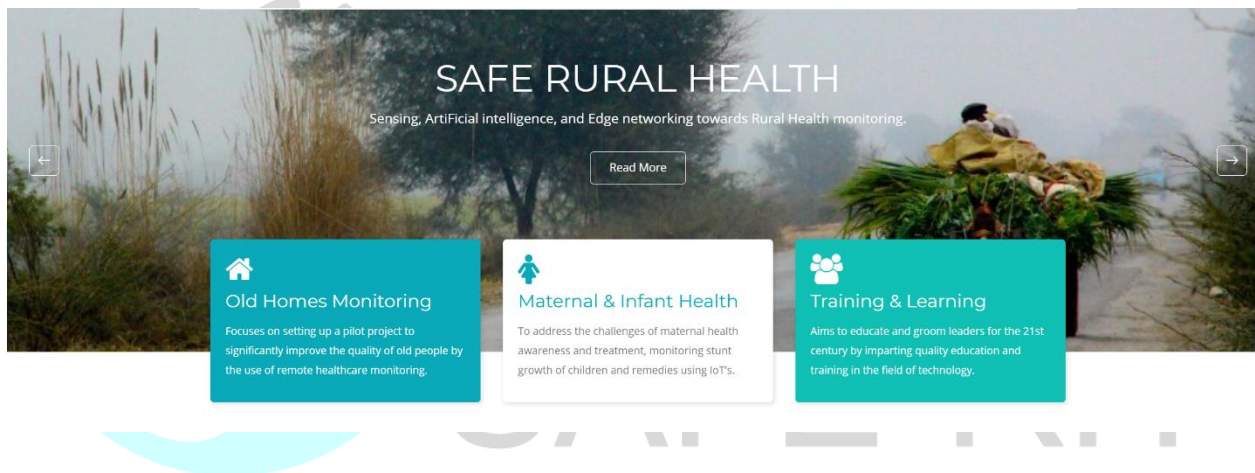
2.2. Header

The header of the website that stays at the top of the website consists of navigation menu, logo, email address, link to social media platforms and login for admin dashboard.



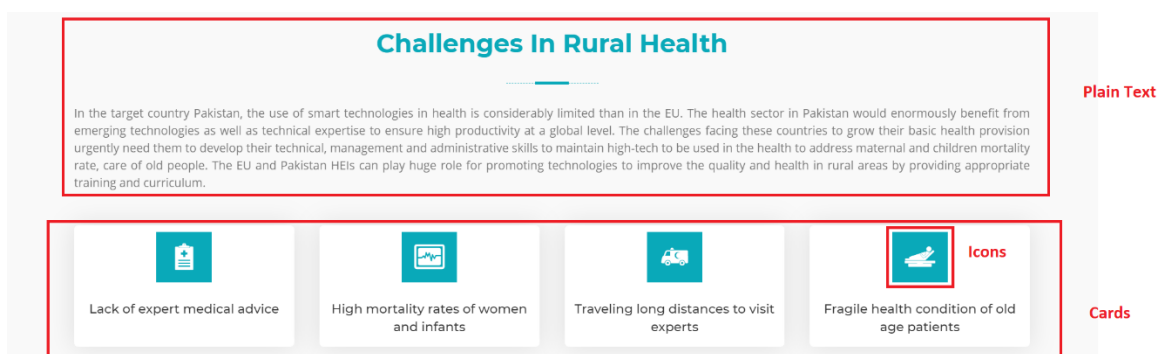
2.3. Banner

To define SAFE-RH project and to pictorially present the theme of the project the banner part on the website is designed. It contains the project thematic images which may change with timer and stay with mouse hover option. Two buttons are designed on left and right of the banner to explicitly change the thematic images. Another button *Read More* is placed to directly move on to *About* TAB. The rectangle cards are designed to display the pilots of the SAFE-RH which overlay the banner part.



2.4. Body

The body of the website designed in such a way that it not only presents content in the plain text and contains images and icons, but for emphasis purposes the content is presented on customized rectangle cards. The content in body part changes with the selection of different option from navigation menu.



2.5. Footer

The footer of the website stays consistent while navigating across the website. It designed to present information about the project partners, unique project identity, funding agency, disclaimer statement, copyright information and direct access link to home page of the website.



2.6. Navigation Menu

On the top of the website navigation menu is designed keeping in view all the needs of SAFE-RH visibility to the target audience. It consists of following eight menu items and selection of each menu item navigate the user to respective webpage. When the website is browsed through its URL, the home page is displayed by default. The selected menu items is presented in dark black whereas rest of the menu items are displayed in grey black colour. Detail about each menu items is presented in follow subsections.

Home About Partners Target Groups Activities Research News & Events Contact us

2.6.1. Home

The selection of home menu items displays homepage that consists of following content in the respective body part:

- **SAFE-RH in Brief:** In plain text the big picture of the project is presented.
- **Challenges in Rural Health:** It is designed using plain text, special rectangles and customized icons to get more attention of the user on challenges in rural health.
- **Project Highlights:** Project highlights part is designed to seek attention of user exploiting attractive colour scheme, rectangle-based separation, icon along with plain text. The information remains static due to its never changing nature.
- **New and Event:** It showcase only three recent events in rectangle cards having title of the event, short description, image and date of the event. This dynamic information which changes with the periodic updates.

2.6.2. About

The page of About provides details of SAFE-RH including information about consortium, aim and objects, mission, and challenges of the project in more elaborated form. Image on this page is about map of the Pakistan filled with different iconic images such as sensors, target audience and medical

related. The colour of is image is customized to green. Since the information presented on this page is constant that why kept static on the website.

2.6.3. Partners

This page present information about all four partners of SAFE-RH. The content consists of name of partner university, its logo and URL to reach website and short description about the partner university.

2.6.4. Target Groups

This page contains important information in plain text about the target groups of the project. The content on the page can be of interest for the reader to understand the essence of SAFE-RH, its reach and scope.

2.6.5. Activities

In order to understand the working of the project. Year-wise major activities of the project are presented on the Activities page.

2.6.6. Research


In order to display the research outcomes of the project, the navigation menu item *Research* allows a general user of the website to reach the Research page. Login based admin panel of this page is also designed to add, delete, and update information relevant to the research.

2.6.7. News and Events

For updating a user of the system about different news and event, the webpage News and Events is designed. It is accessible by the general user through menu item with same captioning. Login based admin panel for this page is also available to add, delete and update news and events about SAFE-RH. For a particular news title, description, detailed content, date and image can uploaded through admin panel which are later on editable.

News & Events

[+ Add More](#)




Call for WORKSHOP.....Register Now.

Workshop on Remote Health Monitoring for Elderly People, Maternal and Infant.

Apr, 22 2021

[Read More](#) [Delete](#) [Edit](#)




Visiting Rural Areas in Pakistan

Pakistani partners have planned to visit rural areas to find the prevailing facilities to develop the scenarios.

Jan, 01 2021

[Read More](#) [Delete](#) [Edit](#)



Meeting with Medical Doctors

The first meeting session with medical doctors in Pakistan was held to know the existing medical infrastructure for rural health.

Dec, 01 2020

[Read More](#) [Delete](#) [Edit](#)

Add News & Events

Title *

Enter title here...

Description *

Enter short description here

Detailed Content

Paragraph **B** *I*

Enter detailed content here

News or Event *

News Event

Date *

mm/dd/yyyy

Cover Image *

No file chosen

2.6.8. Contact Us

The website design allows a general to user to reach the project teams through email. Using custom build email support at the Contact Us page enable a user to send a text message.

HOME > Contact Us

CONTACT DETAILS

Your name

Your email

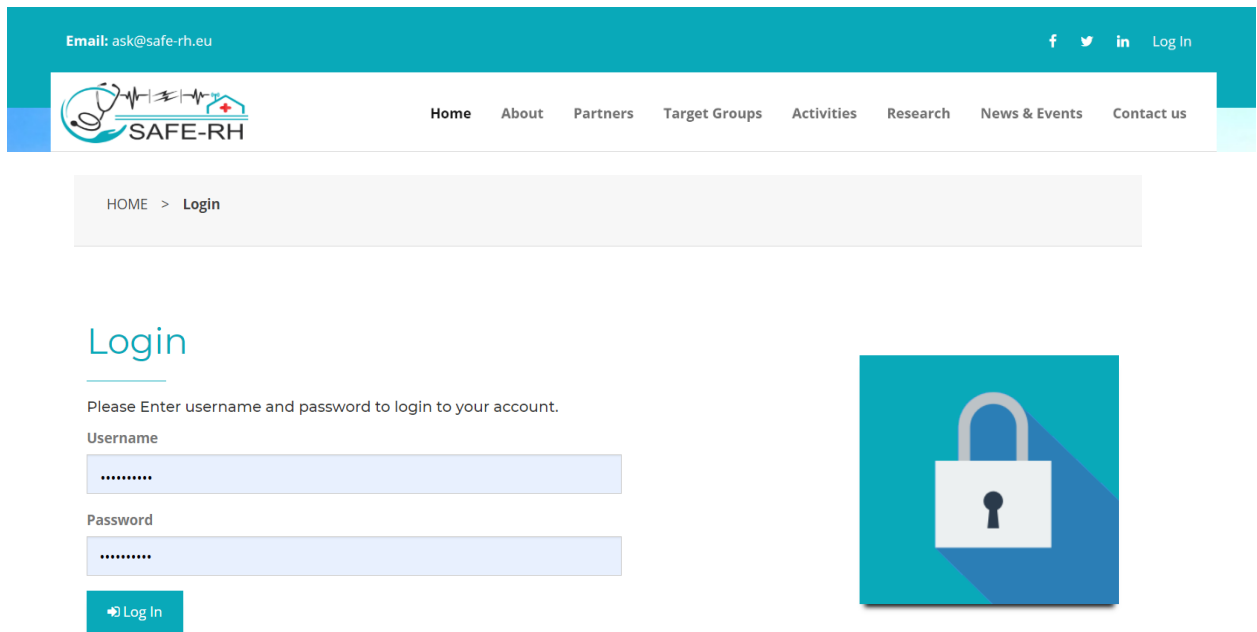
Phone

Subject

Your message

2.7. Admin Panel

To update content for the dynamic page of the website, the password protected admin panel is available to the management of the project through a link available on header of the website.



2.8. Hosting

Keeping in view the 24/7 availability, performance, and excellent SSL support for security of the website, the best web hosting service of GoDaddy (<https://pk.godaddy.com/>) is chosen. Although it provides only on email ID with domain name selected, however more can be purchased as and when required based on needs of the project.

Following the funding agency requirements, <https://safe-rh.eu/> domain is purchased. The SAFE-RH website is already launched and accessibly by the same URL.

3. Logo of the Project

Logo visually communicate the unique identity of any company, brand, or project. Following the same intent, a customized logo in-line with the theme of the SAFE-RH is designed. The logo represents the availability of medical services at doorstep in rural areas through ICT and IoT. Three variants of the logo with full name, acronyms and image only are designed.

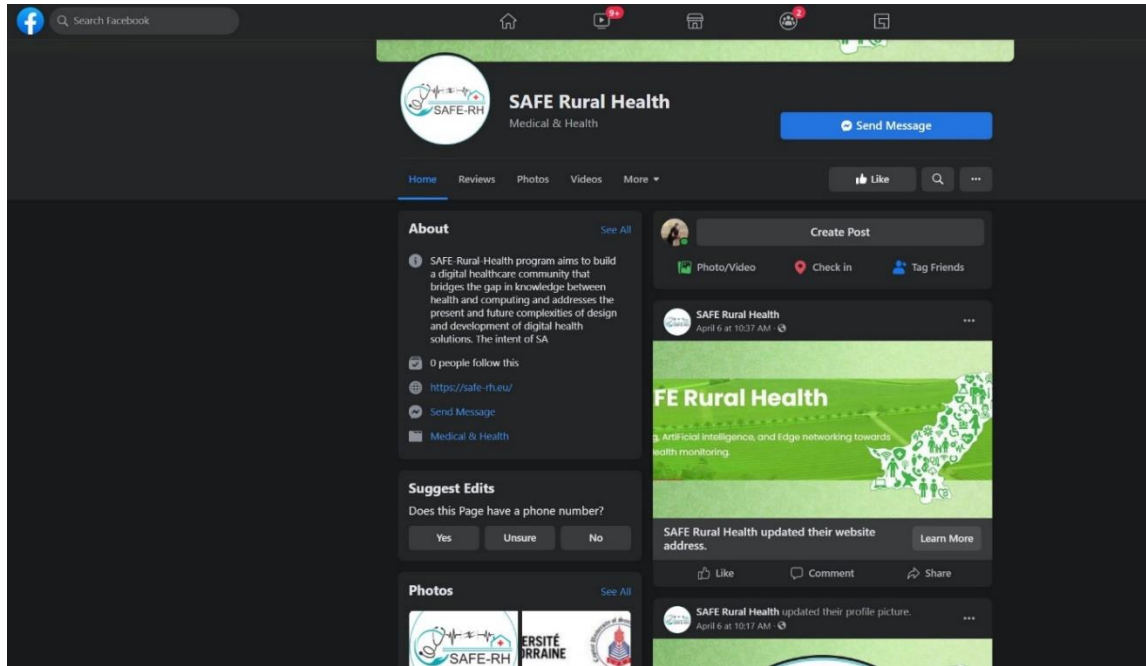


4. Social Media Platforms

The social media platforms are developed to increase the reach of the project as much as possible. The name of the platforms along with the screenshots of the project page/profile is given below.

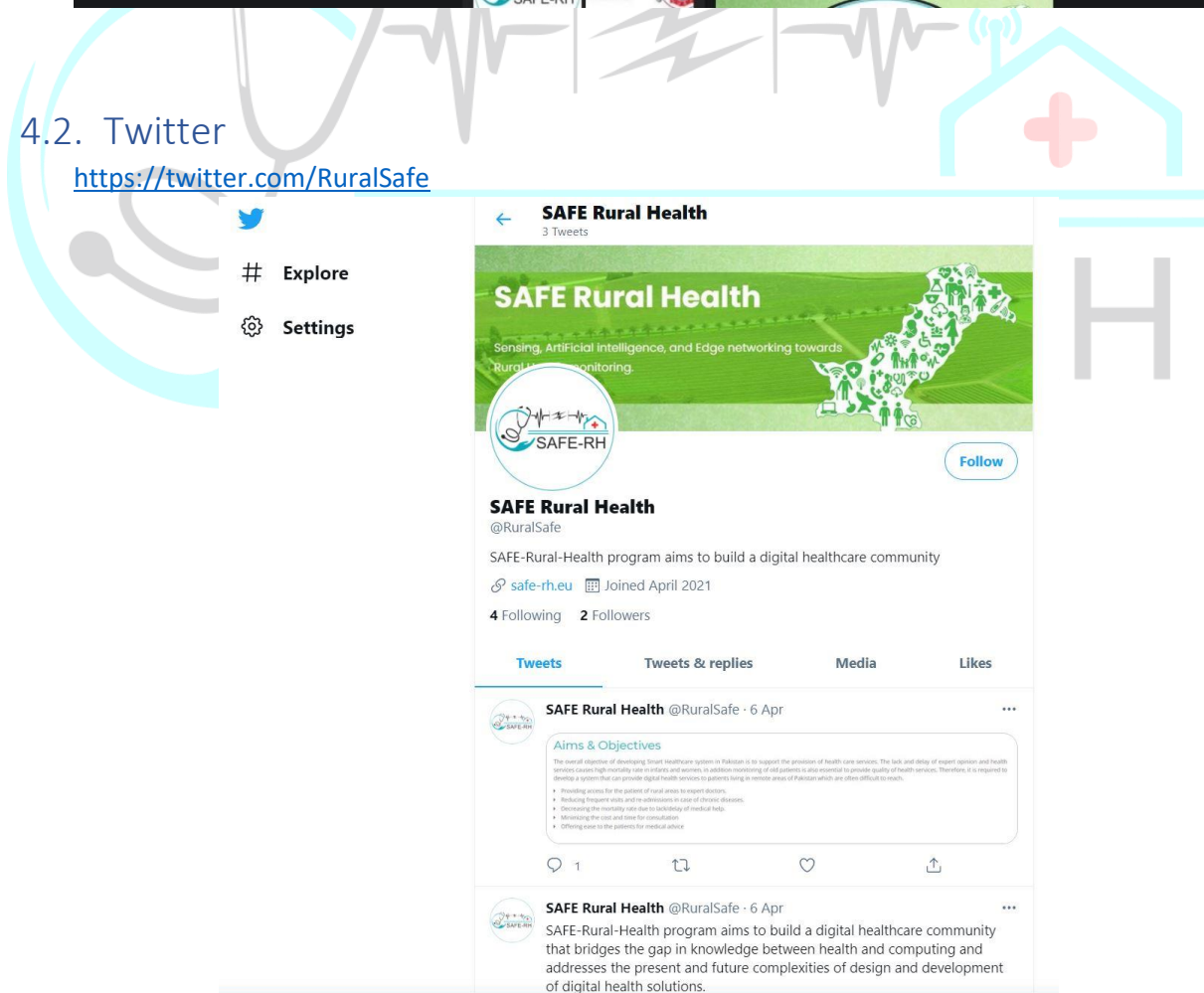
4.1. Facebook

<https://www.facebook.com/SAFE-Rural-Health-104638741664829>



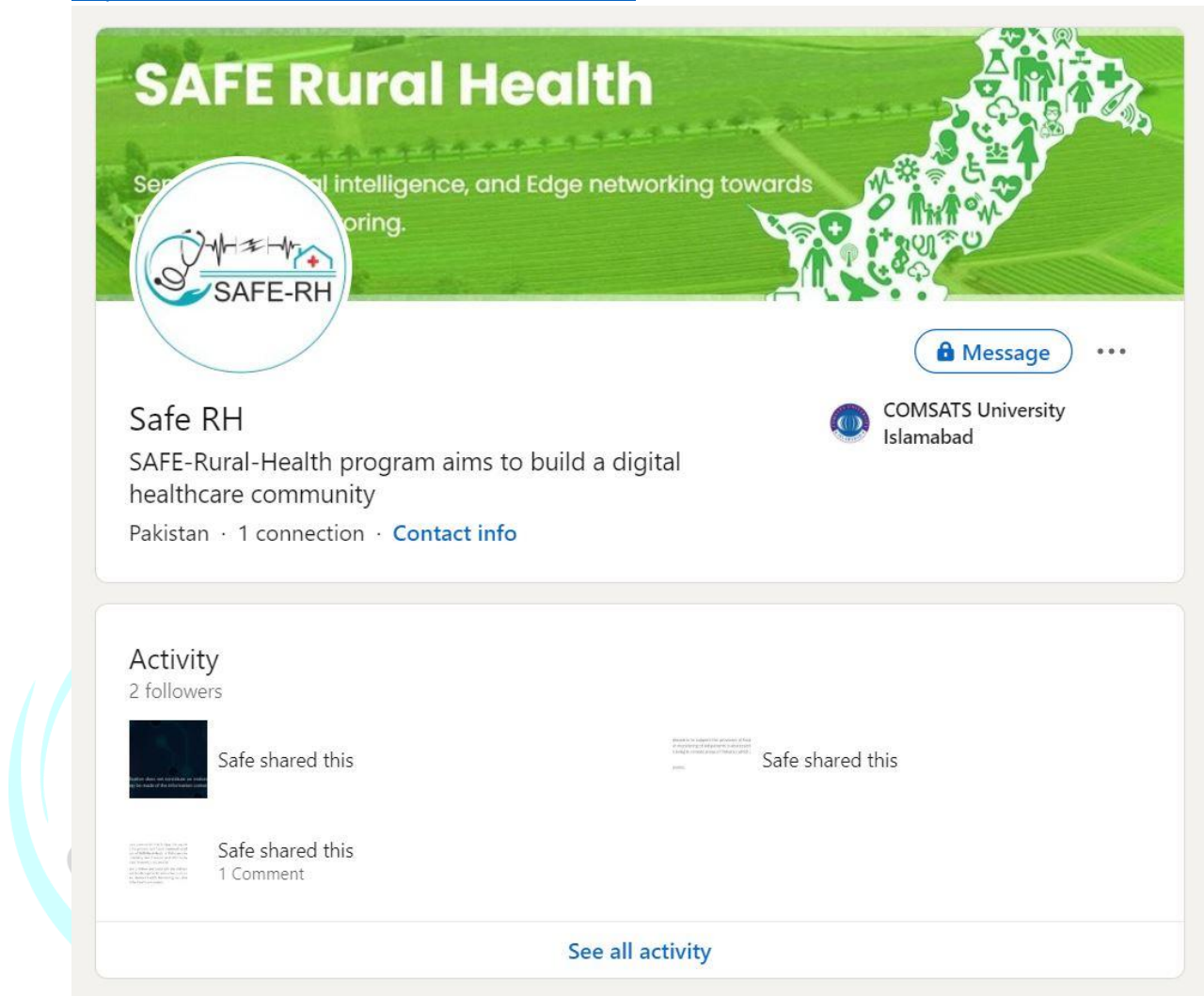
4.2. Twitter

<https://twitter.com/RuralSafe>



4.3. LinkedIn

<https://www.linkedin.com/in/safe-rh-50424820b/>



5. Behind the Scenes

In order to finalize the website and logo of the project many efforts are made behind the scenes. In this regard, six different templates of the website are developed and long list of logos is designed.

5.1. Website Templates

Following are the screenshots of the six templates designed and developed for the website after rigorous efforts of the team.

Call: +92 051 931 438 2 | Email: info@culwah.edu.pk | Location: Capital Territory Islamabad, Pakistan

Home | About | Partners | Target Groups | Research | News & Events | Contact Us

SAFE Rural Health

Sensing, Artificial Intelligence, and Edge networking towards Rural Health monitoring.

Learn More

- Old Homes Monitoring
- Maternal & Infant Health
- Training & Learning

Call: +92 051 931 438 2 | Email: info@culwah.edu.pk | Location: Islamabad, Pakistan

Home | About | Partners | Target Groups | Research | News & Events | Contact Us

SAFE RURAL HEALTH

Sensing, Artificial Intelligence, and Edge networking towards Rural Health monitoring.

About Us

Old Homes Monitoring

Focuses on setting up a pilot project to significantly improve the quality of old people by the use of remote healthcare monitoring.

More Info >

Maternal & Infant Health

To address the challenges of maternal health awareness and treatment, monitoring, stant growth of children and remedies using IoT's.

More Info >

Training & Learning

Aims to educate and groom leaders for the 7th century by imparting quality education and training in the field of technology.

More Info >

Phone: +92 051 931 438 2 | Email: info@culwah.edu.pk | Location: Islamabad, Pakistan

Home | About | Partners | Target Groups | Research | News & Events | Contact Us

SAFE Rural Health

Sensing, Artificial Intelligence, and Edge networking towards Rural Health monitoring.

Learn More

Home | About | Partners | Target Groups | Research | News & Events | Contact Us

SAFE Rural Health

Sensing, Artificial Intelligence, and Edge networking towards Rural Health monitoring.

Learn More



5.2. Logo Alternatives

Following are the images of the logos designed for the SAFE-RH.

